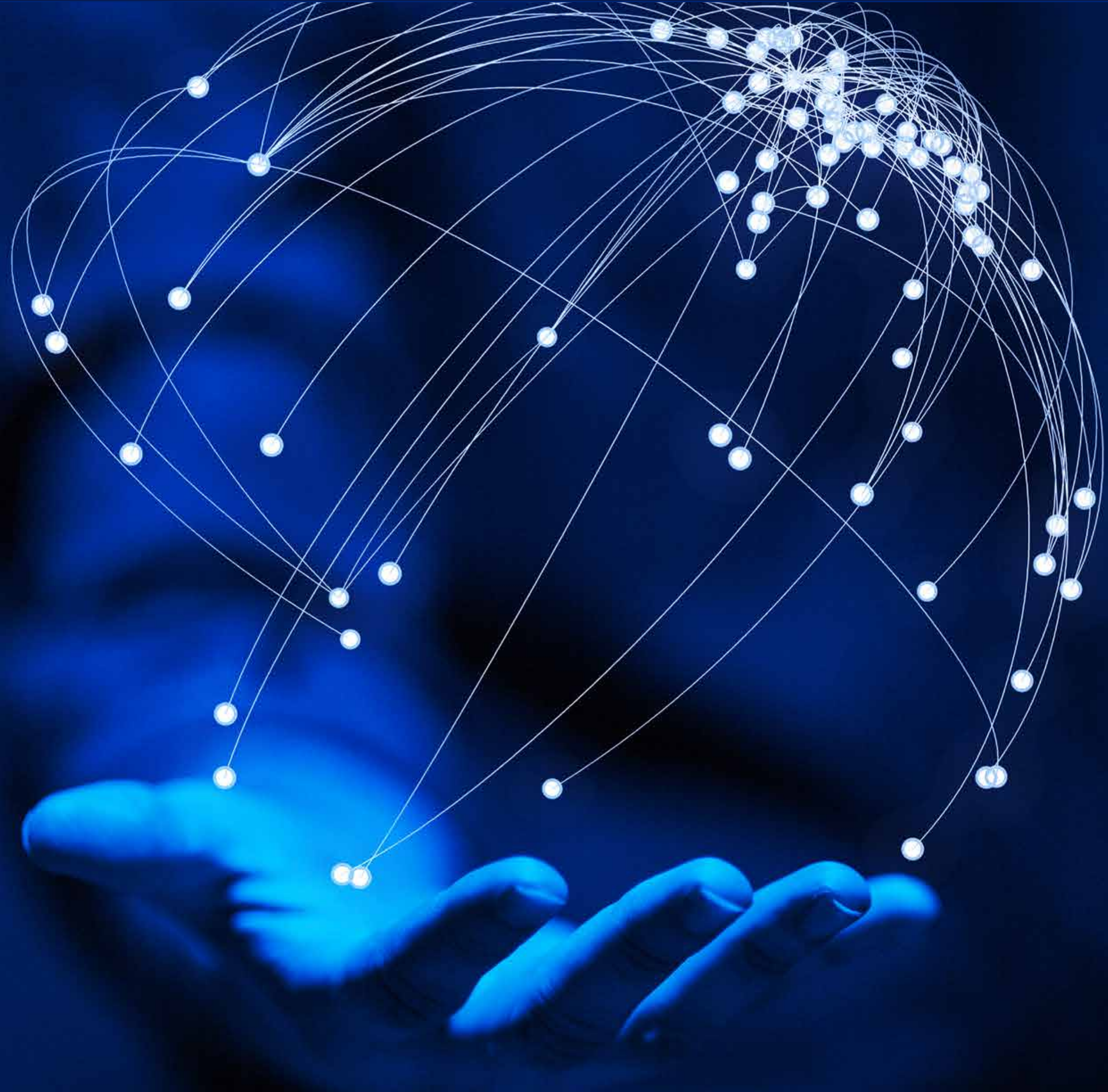


GLOBAL CONNECTIONS

GREECE | CHINA | BULGARIA | ROMANIA | SERBIA



PERFECTION IS AN ATTITUDE



Shipping &
Forwarding Group

→ Squaring the circle
with **11** strategic owned locations



TEU SHIPPING & FORWARDING GROUP
is a Greek privately owned company
established in 2004 in Thessaloniki Greece.

GREECE | CHINA | BULGARIA | ROMANIA | SERBIA





→ FEEL OUR PULSE



Shipping &
Forwarding Group

FOCUSING IN PERFECTION

Our major focus and expertise lies in providing the full range of transportation and logistics services in order to ensure reliable and tailored solutions of transportation, storage and distribution for our customers. We are constantly seeking ways to satisfy the needs of our customers in the most safe, secure and cost-efficient way.



Freight forwarding solution by Sea, Air and Road, all helping organization to optimize freight forwarding cost, comply with regulation.

- → Sea Freight
- → Air Freight (certified IATA member)
- → Road Freight (International & Domestic)
- → Rail Freight
- → Special Transport Project
- → Sensitive & Perishable
- → Warehousing, Distribution, 3PL
- → Customer Brokerage Services
- → Insurance Services
- → Consultancy services

TEU GROUP HUMAN CAPITAL

→ **250+**
INDIVIDUALS



60%
WOMEN

40%
MEN



**CORPORATE
SOCIAL
RESPONSIBILITY**

RECOGNISED AND CERTIFIED
Since 2018 we are certified IATA member
and ISO 9001 ISO 14001 certified.



Accredited
Agent



Shipping &
Forwarding Group

WHY US

Trusted by 8000+ clients

We deeply believe that new business opportunities could be found when a true and strong collaboration is established

Team Work

We stand by you at all times, working constantly as a team to achieve the best possible outcome based on our expertise, dedication, passion and result orientation philosophy.

Speed & Quality



Our speed is verified by our flexibility to cope with even the most difficult and demanding situations, while providing high-quality services at the most effective competitive offer.



→ **2** decades of experiences

→ **Own offices** in ASIA & EUROPE

→ **100** collaborators dedicated to our clients/partners

→ **8000+** clients

→ **100.000** shipments by sea / air / road / rail

→ **20** global networks of selected freight forwarders

ACTIVE LISTENING

SOLUTIONS

DEDICATION PASSION

RESULT ORIENTED

RELIABILITY INTEGRITY

FLEXIBILITY RESILIENCY

VALUES ATTITUDE

→ **We care for your cargo, your budget, your peace of mind**

OUR BENEFITS, YOUR BENEFITS



→ **Key partnership with major shipping lines and airlines**

TEU Group has its own business contract services

→ **The 20 Networks of selected Forwarders companies**

- Providing adapting solutions without borders through our TEU's representative agents/partners all around the world.
- Our partners are reflecting our values, our attitude, our jobs.
- Pooling our knowhow, expertise and expediency / Joining our strengths.
- Result oriented and always focusing on the Client's satisfaction.

20 Freight Forwarder Networks with **195** countries covered



→ **10.000 +** partners around the world

→ **Convinced that a successful business is created by a real & efficient relationship between us**

RECOGNISED AND CERTIFIED
Since 2018 we are certified IATA member and ISO 9001 ISO 14001 certified.



Accredited Agent



FREIGHT FORWARDING SOLUTIONS



Shipping &
Forwarding Group



01

OCEAN FREIGHT IMPORT & EXPORT

- Full Container Load (FCL)
- Less Container Load (LCL) groupage*
- IMO Shipments
- Reefer Containers
- Special Cargo
- Project Management
- Cross Bookings
- Insurance

○ **70.000**
teus/year

→ We are key account-partners with the major worldwide shipping companies, cooperating with our own service contracts.

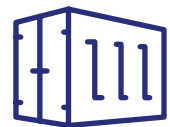


01.1 LCL LESS CONTAINER LOAD

WEEKLY OCEAN CONSOLIDATION SERVICES

→ from SE Asia / FE Asia /
India / USA / Canada
to SE Europe

→ from SE Europe
to USA / Canada / Arabian
Gulf / India /
SE Asia / FE Asia / Cyprus



→ We offer consolidation with weekly direct service to the ports of Piraeus / Thessaloniki / Varna / Constanta in the most competitive market prices.



Shipping &
Forwarding Group



02

AIR FREIGHT

- From & to all airports in the world
- Emergency shipments
- FFO, OBC
- Charter services
- Dangerous goods (DGR) shipment
- Perishable shipment
- Courier service
- Oversized & heavy shipment
- Temperature controlled service
- Live animals

● **2.800**
tones/year



Accredited
Agent





03

ROAD FREIGHT INTERNATIONAL & DOMESTIC

- Full Truck Load (FTL)
- Less Truck Load (LTL) Groupage
- Reefer truck
- ADR Shipments
- Cargo insurance
- Project cargo
- Oversized cargo
- Specialization in Balkan region from/to all Europe
- Intermodal

● **19.000**
shipments/year

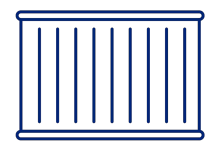


03.1 LTL LESS TRUCK LOAD

WEEKLY/ BIWEEKLY GROUPAGE SERVICES

→ Countries we serve:

- Austria
- Bulgaria
- Belgium
- Cyprus
- Czech Republic
- France
- Germany
- Greece
- Hungary
- Italy
- Netherlands
- Poland
- Portugal
- Romania
- Serbia
- Slovakia
- Slovenia
- Spain
- UK



→ Discover our groupage services, powered by a fleet of GPS-equipped trucks with ADR Licenses. Take advantage of our flexible services: pick-up, deliveries & last-mile, cross-dock, warehousing, express van.



Shipping &
Forwarding Group



04

RAIL FREIGHT INTERNATIONAL

- Full Container Load (FCL)
- Less Container Load (LCL - Groupage)
- IMO Shipments
- Cargo insurance
- Intermodal

→ We always offer optimised logistics solutions and the railway is a great option for many kinds of freight, particularly when connected with other means of transport as part of a multimodal logistics service.



05

SPECIAL TRANSPORT PROJECTS

- Heavy Load /or Oversized Cargo
- Cargo Reception & Warehousing
- Lashing & Loading
- Ro Ro
- Break Bulk
- Chartering
- Machinery

→ The nature of the cargo is defined according to the answer of one question:
*During its international transportation, can the cargo be put in an existing container or not? When the answer is no, its a **project cargo**.*

We are Project Cargo Expert.





06

TIME CRITICAL
SHIPMENT 24/7

- **24/7** availability of Logistics staff
- Speedy and accurate response to **customer** requirements
- Clear and accurate lines of communication [especially out of office hours]
- Quickest possible transit times at most **cost-effective price**

→ If your business deals with Time critical commodities and you are looking for a top-class freight forwarder/logistics provider, you need reliability, specialist expertise and personal attention.

Whether it's a one-off shipment or a special cargo, large or small, local or the other side of the world, it's too valuable to be left to chance.

We are Time Critical Expert





07

PERISHABLE & SENSITIVE CARGO

- Chilled & frozen foodstuff
- Fresh fruit & vegetables
- Food service professionals
- All temperature-controlled products
- Plants & Flowers
- Dairy Products / Bakery Products
- Pharmaceuticals
- Medical Care Products
- Confectionery & Juice Concentrate
- Convenience Products
- Chemicals
- Sensitive Industrial

→ We have dedicated personnel fully conversant in the special handling of these movements and we can provide professional and consistent services. We have experience to deal with the unique risks and challenges of the perishables business, from one end of the supply chain to the other.

We are perishable & sensitive cargo Experts.



08

DEPOT
SERVICES



→ **Container Logistics Management**

All types

- Container / Break Bulk / Palletized cargo
- Oversized & Heavy Load cargo
- Reefer / Tank container heating & Storage / IMO

All services

- Storage, Stuffing, Stripping, Loading
- Redistribution Reforwarding
- Sale Purchase Repairing Washing Cleaning
- Heating, sockets for unit in ops.

→ **Tailor-Made logistics solutions**

Trucking, Tipping chassis, Low bed transport (i.e. Marble blocks trucking from quarries and stuffing)

→ 24/7, Safe & Restricted area, Special operations





09

LOGISTICS & DISTRIBUTION

3PL SERVICES

- Warehouse: Bonded / DGD / Cold Chain
- Supply Chain Management
- Delivery
- Cross Docking
- 3PL

→ We provide adapting and specific solutions, transforming the challenges associated with our needs into competitive advantages.





10

CUSTOMS CLEARANCE

- Import and Export customs clearances
- Coordination and presence on behalf of the importer-exporter at physical custom inspections.
- Advice on customs regulations as well as VAT and duty expenses in imports.
- Management of goods transit documentation.
- TAX tributary and fiscal enquires.
- AEO Accredited services on link with customs
- ISO certified
(ISO-9001:2008, ISO-14001:2004)

Top Level Service

→ In order to provide integrated transport services, we are able to arrange customs formalities for both import and export shipments. Furthermore, we can arrange the lift-off and the customs formalities of in transit cargo to and from the Balkan countries.



11

INDUSTRY SERVICE

→ There have been many sectors that have shaped our shipments. From the beginning we have focused our efforts in various business fields, gradually becoming specialists in a larger number of industries. Our pride is an increasingly heterogeneous portfolio of clients. The gain of confidence and loyalty of our clients is passing through hard work, perseverance, passion, honestly, continuous improvements.

Be one with us

Personalised Logistics Services For All Types Of Industries

- Food & Beverage
- Industrial & Manufacturing
- Chemicals
- Aerospace
- Fairs & Exhibitions
- Government Aid & Relief
- Fresh Fruit & Vegetables
- Plastic
- Health Care
- Electronics
- Fashion
- Marine Parts
- Solar & Semicon
- Marbles
- Consumer & Retail
- Automotive
- Mining
- Oil & Gas
- Perishables & Reefers
- Recyclables
- Removal



Shipping &
Forwarding Group

→ CONTACT US

EUROPE

GREECE

Thessaloniki
[HEAD OFFICE]

Politechniou 31
Thessaloniki 546 26
T: +30 2310 566 788
E: grskg@teu-group.com

Athens INTL Airport
EL.VENIZELOS

Bldg 27, 2nd floor,
office 413, Spata 19019
T: +30 210 3542240
E: grath@teu-group.com

Piraeus

Agiou Dionisiou 3
Piraeus 18545
T: +30 2104 292 280
E: grpir@teu-group.com

BULGARIA

Sofia

9 Vitoshki Kambani Str.,
floor 1, office 1.3
1766 Sofia
T: +359 2 90 730 90
E: bgsof@teu-group.com

Varna

58 Debar str., floor 1, Office 3
9000 Varna
T: +359 52 30 13 12
E: bgvar@teu-group.com

Plovdiv

60 Mariya Luiza Blvd., 3rd
fl., office 3 4017, Plovdiv
T: +359 32 207283
E: bgpdv@teu-group.com

SERBIA

Belgrade

Vladimira Popovica 6,
A106, 1st floor, 11070
Novi Beograd
T: + 381 63 8196 532
E: rsbeg@teu-group.com

Leskovac

Durmitorska bb
(Customs Terminal)
16 000 Leskovac
T: +381 16 600 113
E: rsle@teu-group.com

ROMANIA

Bucharest

Str. Gara Herastrau
Nr.2, Et.5
Cladirea 1 Equilibrium,
Bucharest 020334
T: +40 723882250
E: robuc@teu-group.com

ASIA PACIFIC

CHINA

Xiamen

Unit 816, Buliding A,
Free Trade Financial Center,
No. 1-9 Yu'nan 4th Road, Zone,
(Fujian) Pilot Free Trade
T: +86 0592 2610697
E: info@teuchina.com.cn

Shenzhen

Unit 03/04, 5th Floor, Warehouse
No. 7, Sungang, No. 1007, Baoan
North Road, Sunxi Community,
Sungang Street, Luohu District,
Shenzhen
T: +86 0755 82123875
E: info@teu.hk

→ FOLLOW US

LINKEDIN

FACEBOOK



GREECE | CHINA | BULGARIA | ROMANIA | SERBIA





Shipping &
Forwarding Group

[Let's create a true and fruitful co-operation]

GREECE | CHINA | BULGARIA | ROMANIA | SERBIA

→ teu-group.com

